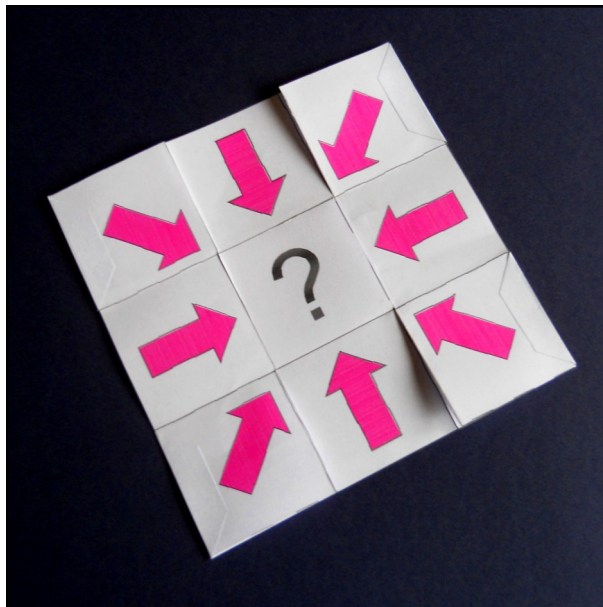


Limbo

Designed by David Mitchell

Limbo is a version of my Purgatory puzzle which is more suitable than the original for innocent souls.

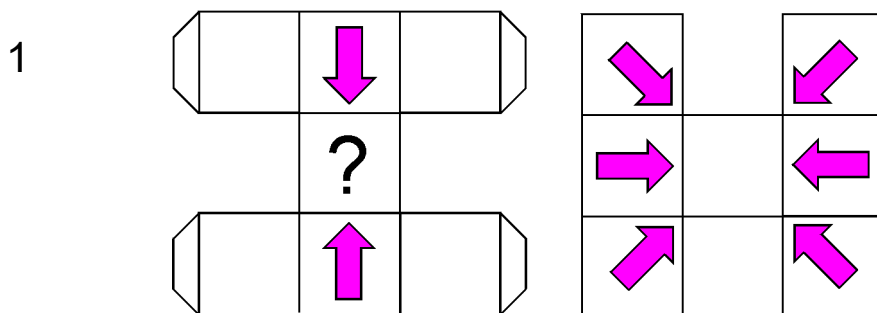
It was first published in The Magic of Flexagons, issued by Tarquin in 1998, under the title of Magic Square Flexagon. Despite this, Limbo is not, strictly speaking, a flexagon at all, although it has some very flexagon-like properties.



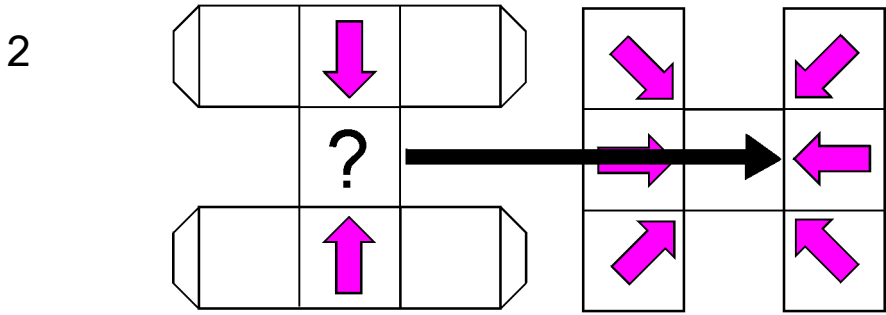
The challenge of Limbo is to discover the large hole in the centre of the puzzle through which a surprisingly large object, such as a standard size coffee mug, will pass.

You will find a template for the puzzle on the last page of this pdf and a slightly larger one on the Puzzles page of my origamiheaven.com site.

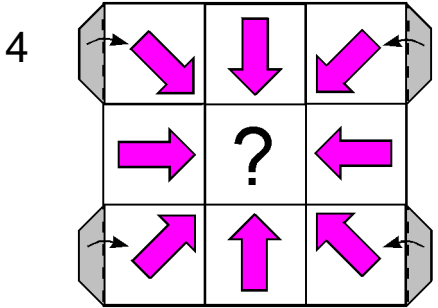
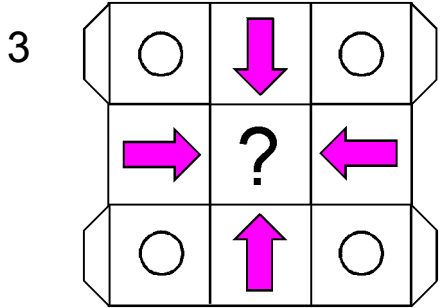
You will get much more from this puzzle if you challenge yourself to solve it first rather than just looking up the solution straight away.



1. Cut out both parts of the template. Fold both parts of the template along all the lines between the squares and between the squares and the tabs. Make sure all the creases work as hinges and fold easily in both directions, backwards as well as forwards.

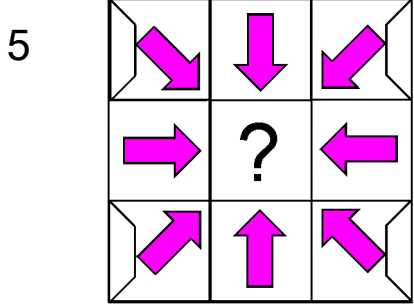


2. Lay one part of the template on top of the other part as shown here.



3. Tuck each of the flaps marked with a circle underneath the flap directly below it.

4. Apply glue to the four small flaps, shown shaded here, then fold them round to the front and press them firmly in place. Allow the glue to dry. Trim off any excess paper around the edges of the squares. Make sure all the creases between the squares still work freely as hinges in both directions.



5. The puzzle is finished. Impossible though it seems, there is a hole right through the centre of the puzzle through which an ordinary sized coffee mug will easily pass, even if it is full.

Copyright David Mitchell 2017
www.origamiheaven.com

